

**AERODROME/  
HELIPORT  
CHART - ICAO**

30°51'26.52"S  
030°20'34.90"E

**ELEV 498'  
GUND 96.3'**

MARGATE RADIO: 122.70

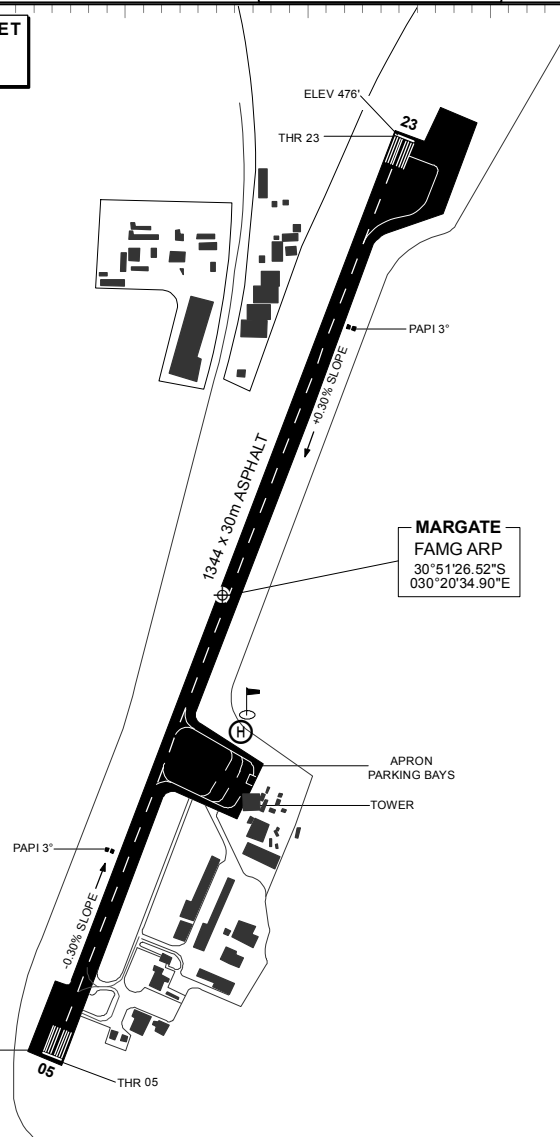
**MARGATE  
FAMG**

**ELEV, ALT & HGT IN FEET  
DIST IN METERS  
BRG ARE MAG**



ANNUAL RATE  
OF CHANGE 0°10' W

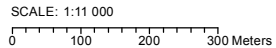
30°51'0"S  
30°51'10"S  
30°51'20"S  
30°51'30"S  
30°51'40"S



**MARGATE  
FAMG ARP**  
30°51'26.52"S  
030°20'34.90"E

RWY LIGHTING					
RWY	ALS	PAPI	RTHL	REDL	RENL
05	NIL	3°	GREEN	WHITE	RED
23	NIL	3°	GREEN	WHITE	RED

OTHER: NIL



20°10'E      30°20'20"E      30°20'30"E      30°20'40"E      30°20'50"E      30°21'E

**PHYSICAL CHARACTERISTICS**

RWY	DIRECTION (T)	THR COORDINATES	THR ELEVATION	TORA (m)	TODA (m)	ASDA (m)	LDA (m)	SWY (m)	CWY (m)	SLOPE	SURFACE	BEARING STRENGTH	CIRCUIT
05	023°	30°51'46.61"S 030°20'25.07"E	488'	1344	1344	1344	1344	0	0	-0.303D	ASPH	TBA	R/H
23	203°	30°51'06.44"S 030°20'44.74"E	476'	1344	1344	1344	1344	0	0	+0.303U	ASPH	TBA	L/H

CHANGE: True/Magnetic Arrows and GUND

EFF: 11 OCT 18